

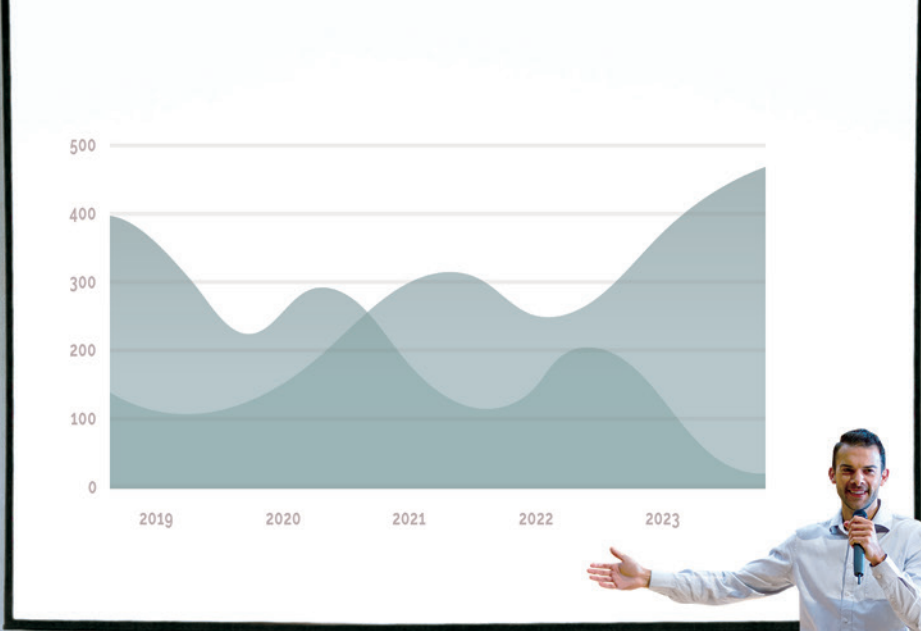


PINPOINT PERFECTION

AVer PTC330

AI Auto Tracking PTZ Camera





The PTC330 AI Auto Tracking PTZ Camera makes powerful and reliable Pro AV capability available to everyone. Drawing inspiration from the AVer Professional PTZ Camera family, the PTC330 features in-house AI functions like Presenter Mode, Zone Mode and Hybrid Mode auto tracking, thanks to Human Detection processing. Combine the 30X Optical Zoom lens and Full HD 1080p resolution with hybrid auto tracking and smooth PTZ functions for broadcasting, streaming, or recording. Your exciting journey of audio and video capturing starts here!



30X Optical Zoom



IP/HDMI/USB/
3G-SDI Outputs



Human Detection AI



Presenter Mode



Zone Mode



Hybrid Mode



Intuitive Web UI



Upside-Down Installation

30X Optical Zoom & 2X Sensor Zoom

The zoom power of the PTC330 reaches an incredible 60X (30X optical and 2X sensor zoom). It works even while the camera is panning and tilting, allowing you to highlight content and rapidly change shooting angles. Operate a closer and clearer video feed with the unbeatable PTZ performance of the PTC330.



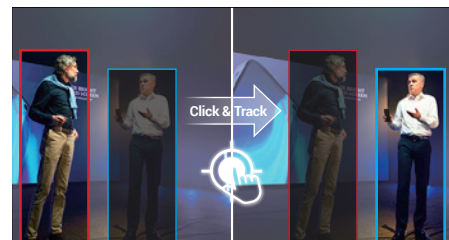
Human Detection AI

Welcome AVer's most advanced AI tool yet—Human Detection. This highly accurate processing function enables the PTC330 to easily detect and capture human forms and moving objects in seconds. Never miss a tracking target again.



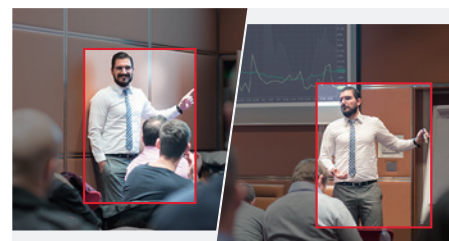
Click & Track

Redirect focus in an instant with the PTC330. Simply click on a target to quickly adjust the shooting angle and initiate precise tracking. This advanced feature is easy for anyone to operate via remote control or Web UI.



Presenter Mode

Track your target everywhere with Presenter Mode. This feature gives presenters the flexibility to leave the stage and interact with the audience, all while being continuously tracked. The camera stays locked on its target, even if other people or objects get in the way.



Zone Mode

Zone Mode enhances your ability to capture content on multiple displays. Create up to four Content Zones to steadily capture the content on display rather than the presenter's movements.



Hybrid Mode

Hybrid Mode provides the utmost freedom of movement for performing artists. Preset effective areas for Zone Tracking in advance, and once you step into those areas, you will be targeted together with the content. When you are outside, you are just like in Presenter Mode.



Product Specifications

Part no. 61S9310000AL
 EAN code 4719552126842

Camera		General	
Image Sensor	1/2.8" 1080p Exmor CMOS	Power Requirement	AC 100 - 240V to DC 12V/5A
Effective Picture Elements	2 Megapixels	Power Consumption	18W
Output Resolutions	1080p/60, 1080p/59.94, 1080p/50, 1080p/30, 1080p/29.97, 1080p/25, 1080i/60, 1080i/50, 720p/60, 720p/59.94, 720p/50	PoE	PoE+
Minimum Illumination	0.7 lux (IRE50, F1.6, 30fps)	Dimensions (W x H x D)	180.0 x 183.5 x 145.0 mm
S/N Ratio	≥ 50 dB	Net Weight	1.7 (±0.1) kg
Gain	Auto, Manual	Application	Indoor
TV Line	900 (Center)	Tally Lamp	Yes
Shutter Speed	1/1 to 1/10,000 sec	Security	Kensington Slot
Exposure Control	Auto, Manual, Priority AE (Shutter, IRIS), BLC, WDR	Remote Control	Infrared
White Balance	Auto, Manual	Operating Conditions	Temperature: 0°C to +40°C Humidity: 20% to 80%
Optical Zoom	30X	Storage Conditions	Temperature: -20°C to +60°C Humidity: 20% to 95%
Digital Zoom	12X	IP Streaming	
Sensor Zoom	2X	Resolution	1080p 60fps
Viewing Angles	DFOV: 72.9° (Wide) to 2.64° (Tele) HFOV: 65.1° (Wide) to 2.34° (Tele) VFOV: 38.4° (Wide) to 1.36° (Tele)	Network Video Compress Formats	H.264, H.265
		Maximum Frame Rate	1080p 60fps
Focal Length	f = 4.3 mm (Wide) to 129 mm (Tele)	Bit-Rate Control Modes	VBR, CBR (selectable)
Aperture (Iris)	F = 1.6 (Wide) to 4.7 (Tele)	Range of Bit-Rate Setting	512 Kbps to 32 Mbps
Minimum Working Distance	Wide: 0.01 m Tele: 1.2 m	Network Interfaces	10 / 100 / 1000 Base-T
Pan / Tilt Angles	Pan: ±170° Tilt: +90° / -30°	Multi-Stream Capability	2 (RTSP / Web Page), 1080p 60fps (max.)
		Network Protocols	IPv4, TCP, UDP, ARP, ICMP, IGMP, HTTP, DHCP, RTP / RTCP, RTSP, RTMP, VISCA over IP
Pan / Tilt Speed (Manual)	Pan: 0.1° to 100°/sec Tilt: 0.1° to 100°/sec	NDI®/HX Capability	N/A
		USB	
Preset Speed	Pan: 200°/sec Tilt: 200°/sec	Connector	USB 3.0
Preset Positions	10 (IR), 256 (RS-232 / RS-422 / IP)	Video Format	MJPEG
Camera Control - Interfaces	RS-232 (DIN8), RS-422 (RJ45), IP	Audio Format	PCM
Camera Control - Protocols	VISCA (RS-232 / RS-422 / IP), PELCO-D & PELCO-P (RS-232 / RS-422), CGI (IP)	Maximum Video Resolution	1080p
Image Processing	Noise Reduction (2D / 3D), Flip, Mirror	USB Video Class (UVC)	UVC 1.1
Power Frequencies	50 Hz, 60 Hz	USB Audio Class (UAC)	UAC 1.0
AI Auto Tracking Functions		Web UI	
Tracking Modes	Presenter Mode, Zone Mode, Hybrid Mode	Live Video Preview	Yes
Audio		Camera PTZ Control	Pan, Tilt, Zoom, Focus, Preset Control
Channel	2ch Stereo	Camera/Image Adjustment	Exposure, White Balance, Picture
Codecs	AAC-LC (48 / 44.1 / 32 / 24K)	Network Configuration	DHCP, IP Address, Gateway, Subnet Mask, DNS
Sample Rates	48 / 44.1 / 32 / 24 / 16 / 8 KHz	Software Tools	
Interface		IP Search and Configuration Tool	Support Windows® 7 or later
Video Outputs	3G-SDI, HDMI, IP, USB	Warranty	
Audio Outputs	3G-SDI, HDMI, IP, USB	Camera	3 Years
Audio Inputs	MIC in, Line in	Accessories	1 Year
Package Contents			
Camera, Remote Control, Power Adapter, Power Cord, Cable Ties (x 5), Screws (x 10), Cable Fixing Plates (x 2), Ceiling Mount Brackets (x 2), Quick Start Guide			
Optional Accessories			
AVer CL01 PTZ Camera Controller, L-Type Wall Mount, RS-232 In/Out Cable, Din 8 To D-Sub 9 Cable			

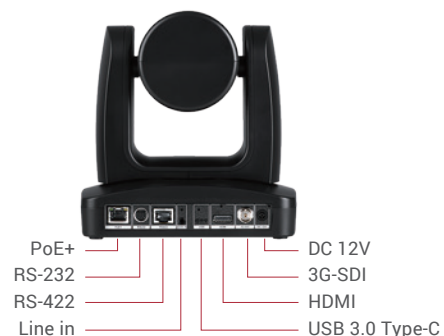
* Specifications may vary depending on location and are subject to change without notice.

Product Appearance

Front



Back



©2021 AVer Information Europe B.V. All rights reserved.
 All brand names and logos are trademarks of their respective companies.

www.avereurope.com



Distributor/Dealer